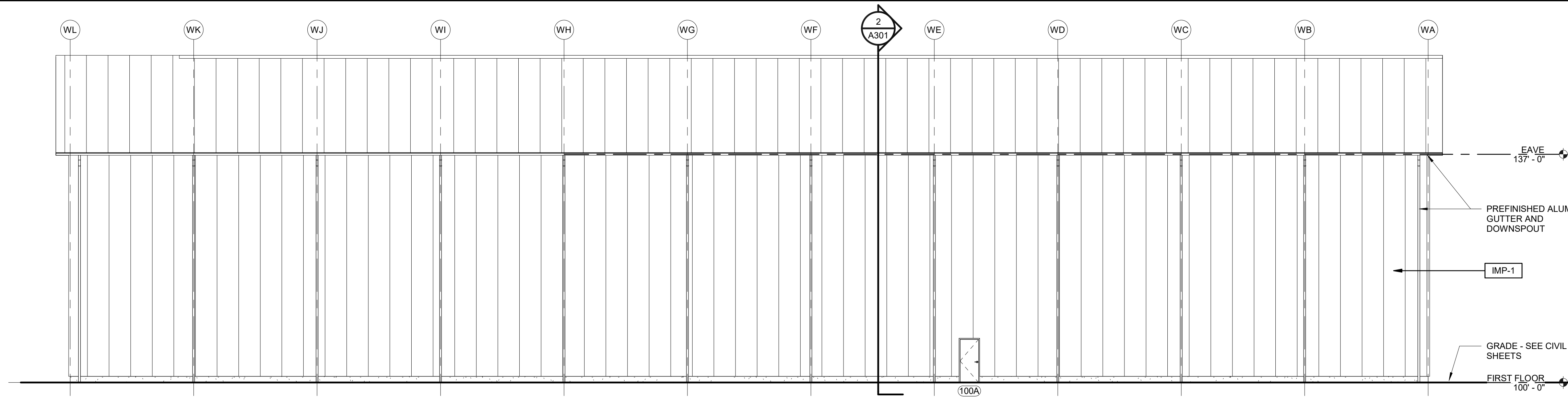
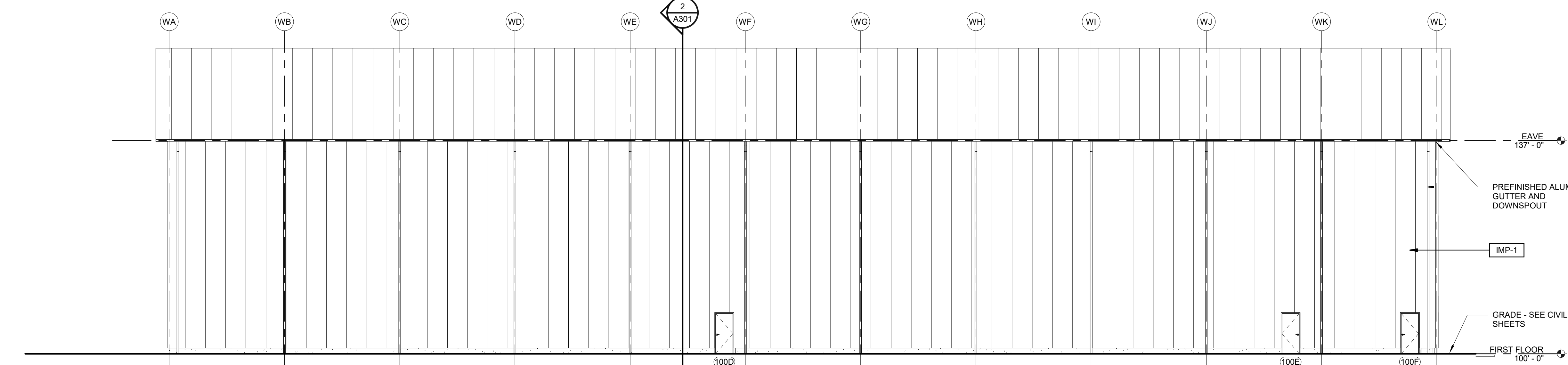


4/15/2019 4:32:54 PM

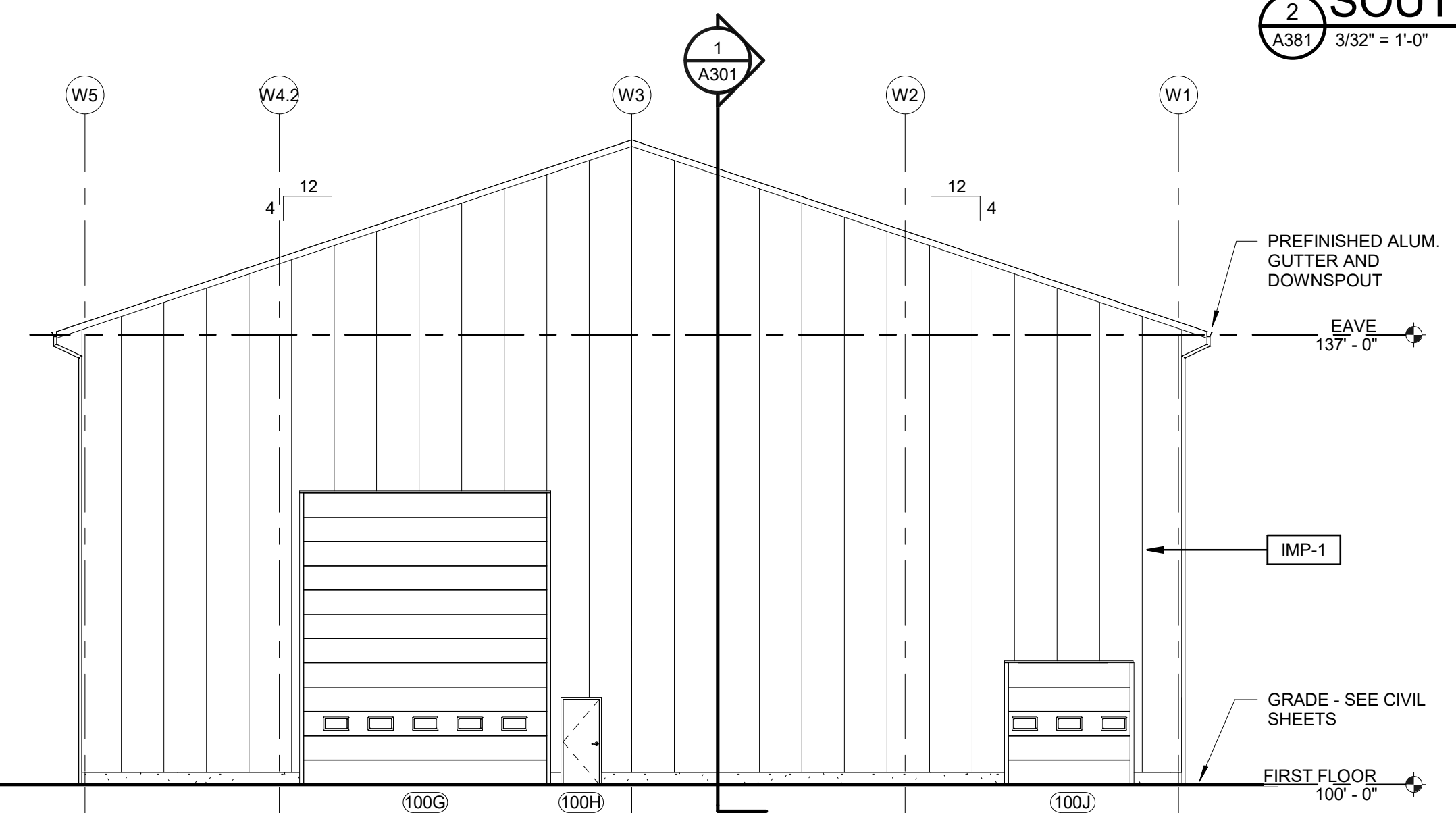
EXTERIOR MATERIALS LEGEND	
IMP-1	3" INSULATED METAL PANEL



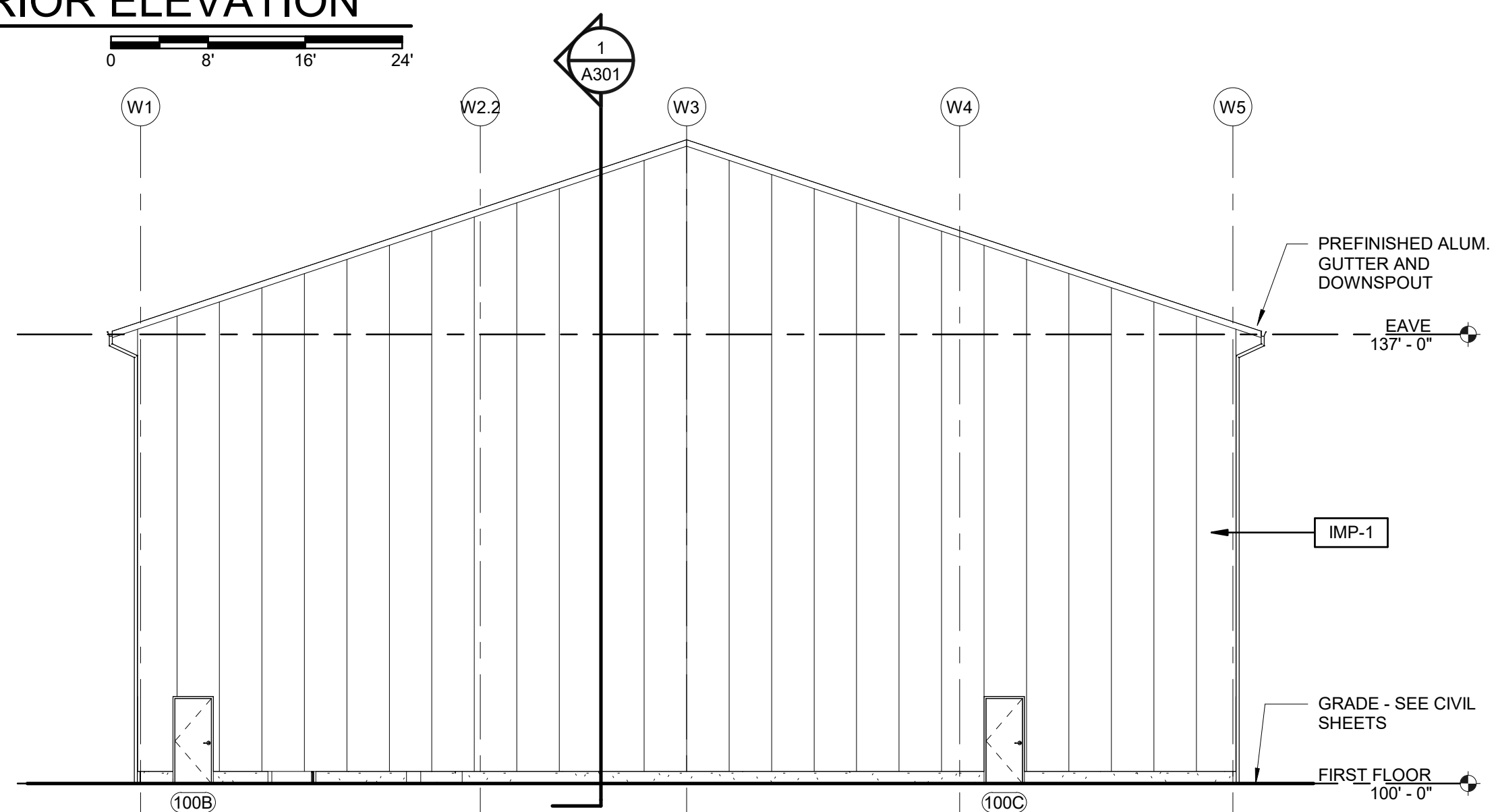
1 NORTH EXTERIOR ELEVATION
A381 3/32" = 1'-0"
0 8' 16' 24'



2 SOUTH EXTERIOR ELEVATION
A381 3/32" = 1'-0"
0 8' 16' 24'




3 EAST EXTERIOR ELEVATION
A381 3/32" = 1'-0"
0 8' 16' 24'



4 WEST EXTERIOR ELEVATION
A381 3/32" = 1'-0"
0 8' 16' 24'

PRELIMINARY SET - 4/16/19



BC ORGANICS
TOWN OF HOLLAND BROWN COUNTY, WISCONSIN
WATER TREATMENT BUILDING EXTERIOR ELEVATIONS

DESIGNED	DRAWN	PROJECT NO.	DATE
MAM	MAM	D0997 - 91800549	MARCH 29, 2019
FACILITY NO.		SHEET NO.	
700		A381	

McMahon provides this drawing and data, regardless of form, as instruments of service. All rights including copyrights are retained by McMahon. No part of this drawing may be reproduced, stored in a retrieval system, or transmitted in any form or by any means, electronic, mechanical, photocopying, recording, or by any information storage and retrieval system, without the prior written consent by McMahon.

C:\Revit\Files\Revit Local\Copies\BC Organics_Water Treatment Building-Arch_pkolanki@mcngrp.com.rvt

McMAHON
ENGINEERS ARCHITECTS