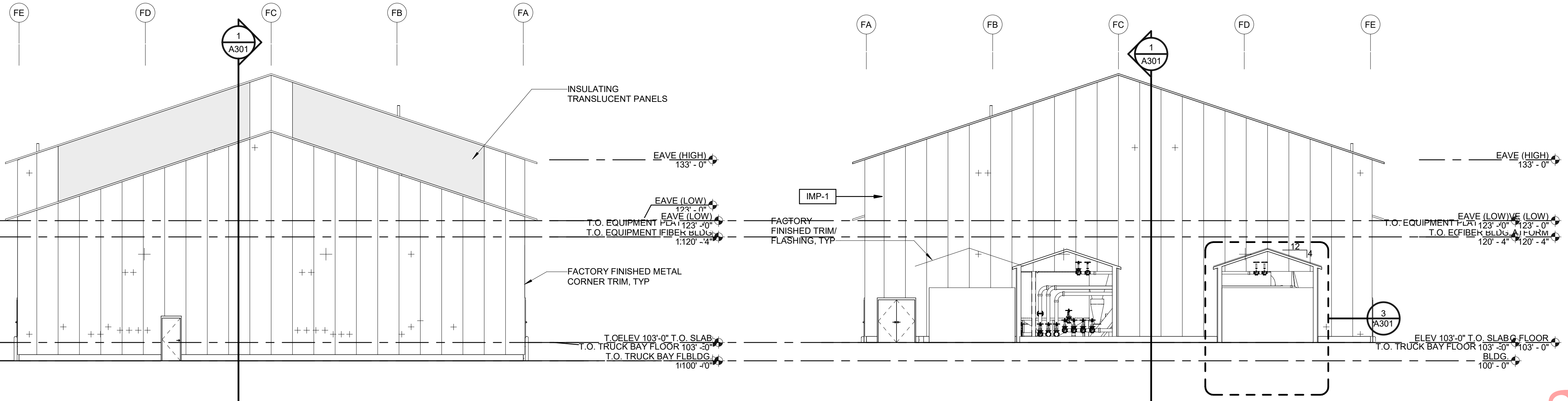


4/15/2019 4:57:22 PM

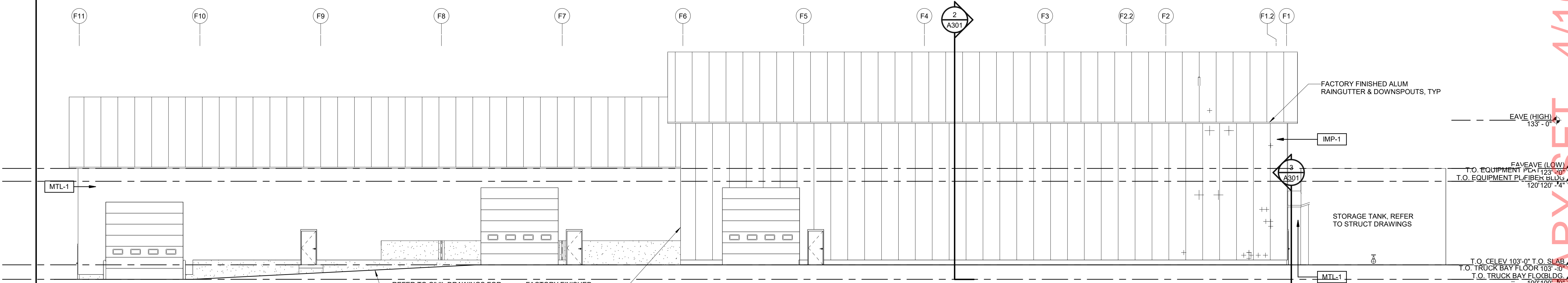
EXTERIOR MATERIALS LEGEND

- IMP-1 3" INSULATED METAL PANEL
- MTL-1 PREFINISHED METAL PANEL

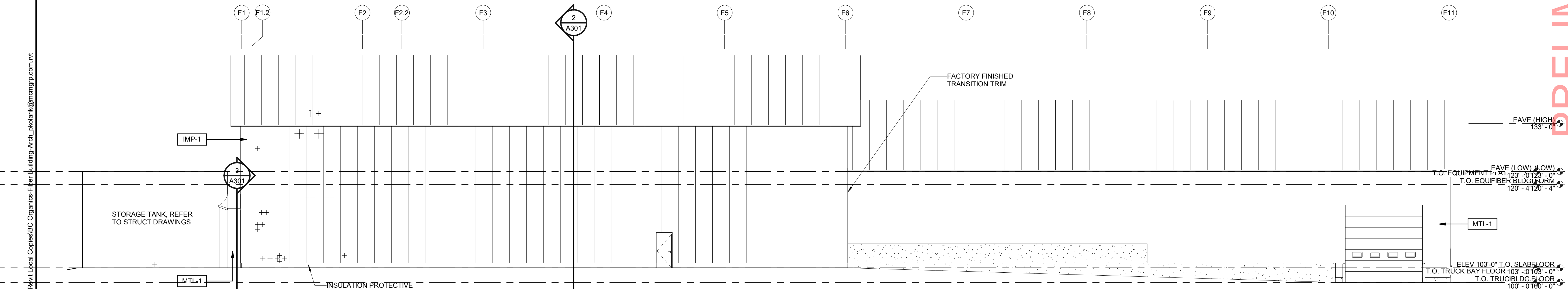


1 EAST EXTERIOR ELEVATION
 A381 3/32" = 1'-0"
 0 8' 16' 24'

2 WEST EXTERIOR ELEVATION
 A381 3/32" = 1'-0"
 0 8' 16' 24'



3 NORTH EXTERIOR ELEVATION
 A381 3/32" = 1'-0"
 0 8' 16' 24'



4 SOUTH EXTERIOR ELEVATION
 A381 3/32" = 1'-0"
 0 8' 16' 24'



McMahon provides this drawing and data, regardless of form, as instruments of service. All rights including copyrights are retained by McMahon. The recipient agrees to indemnify and hold McMahon harmless for any reuse or changes made to the drawing without the prior written consent by McMahon.

NO.	1
DATE	11/27/18
REVISION	DNR SUBMITTAL

BC ORGANICS
TOWN OF HOLLAND, BROWN COUNTY, WISCONSIN
FIBER BUILDING EXTERIOR ELEVATIONS

DESIGNED	KLN
DRAWN	KLN
PROJECT NO.	D0997-91800549
DATE	SEPTEMBER 28, 2018
FACILITY NO.	600
SHEET NO.	

A381



PRELIMINARY SET - 4/16/19

C:\Revit Files\Revit Local Copies\BC Organics\Fiber Building-Arch_pkoala\k@mmcmgr.com.rvt