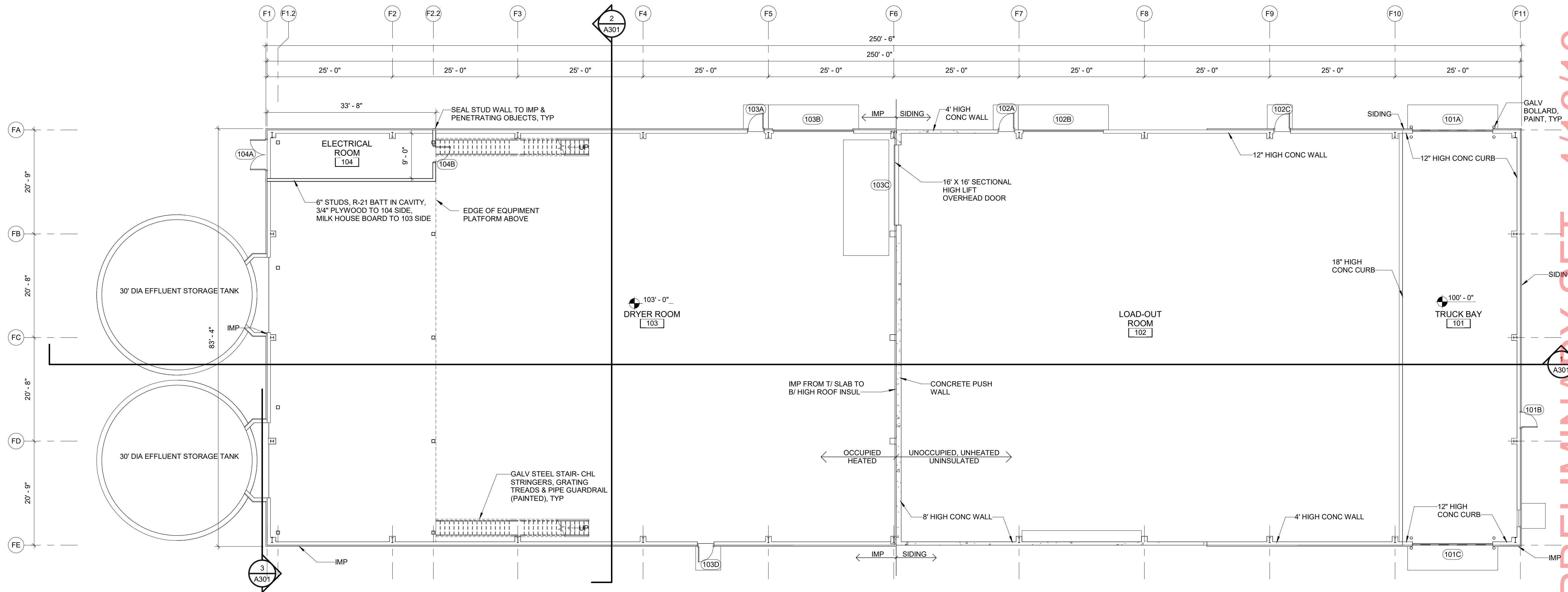


GENERAL PLAN NOTES

- DO NOT SCALE FROM DRAWINGS. BRING ANY DISCREPANCIES TO THE ARCHITECTS ATTENTION IMMEDIATELY.
- COORDINATE LOCATIONS AND QUANTITY OF WORK WITH MECHANICAL, ELECTRICAL, AND PLUMBING CONTRACTORS.
- ALL DIMENSIONS ARE CLEAR FROM THE FACE OF FINISHED WALL/PARTITION TO FACE OF FINISHED WALL/PARTITION OR FACE OF EXISTING WALLS ACTUAL FACE.
- ALL PIPING, CONDUIT AND RELATED MECHANICAL AND ELECTRICAL ITEMS SHALL BE CONCEALED WITHIN GYPSUM BOARD FURRING AS REQUIRED IN FINISHED AREAS WHETHER SHOWN ON DRAWINGS OR NOT, UNLESS NOTED OTHERWISE.
- PROVIDE METAL PLATE BACKING AND/OR TREATED WOOD BLOCKING IN WALLS WHERE WALL-MOUNTED EQUIPMENT IS SHOWN ON PLANS OR ELEVATIONS. VERIFY HEIGHT AND LENGTH WITH ACTUAL EQUIPMENT.
- SEE SHEET A011 & A012 FOR LIFE SAFETY PLAN AND FIRE PARTITION RATINGS.
- SHADED AREA INDICATES BUILDING ADDITION AND RENOVATION AREAS.
- CONTRACTOR TO VERIFY ALL EXISTING CONDITIONS BEFORE CONSTRUCTION.



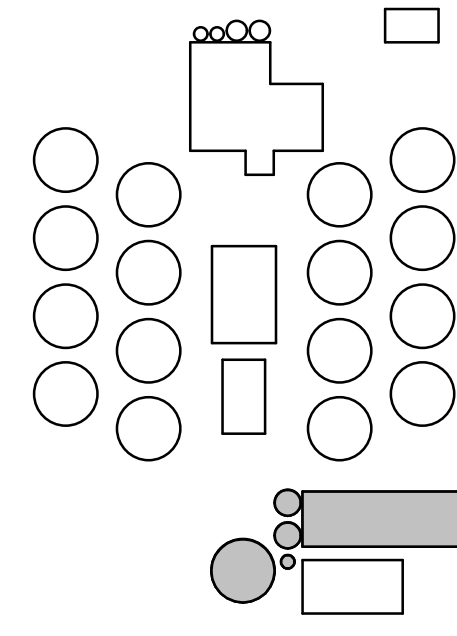
McMahon provides this drawing and data, regardless of form, as instruments of service. All rights including copyrights are retained by McMahon. No part of this drawing may be reproduced, stored in a retrieval system, or transmitted in any form or by any means, electronic, mechanical, photocopying, recording, or by any information storage and retrieval system, without the prior written consent by McMahon.



PRELIMINARY SET - 4/16/19

1 FIBER BUILDING FLOOR PLAN
 A201 3/32" = 1'-0"
 NORTH

TOILET FACILITIES AVAILABLE ON SITE AT OFFICE BUILDING TO NORTH



NO.	DATE	REVISION
1	11/27/18	DNR SUBMITTAL

BC ORGANICS
TOWN OF HOLLAND, BROWN COUNTY, WISCONSIN
FIBER BUILDING FIRST FLOOR PLAN

DESIGNED	DRAWN
	KLN
PROJECT NO.	
D0997-91800549	
DATE	
SEPTEMBER 28, 2018	
FACILITY NO.	
600	
SHEET NO.	