

1 RECEIVING BUILDING PLAN  
 1/8" = 1'-0"  
 0 4 8 16'

**GENERAL PLAN NOTES**

- DO NOT SCALE FROM DRAWINGS. BRING ANY DISCREPANCIES TO THE ARCHITECTS ATTENTION IMMEDIATELY.
- COORDINATE LOCATIONS AND QUANTITY OF WORK WITH MECHANICAL, ELECTRICAL, AND PLUMBING CONTRACTORS.
- ALL DIMENSIONS ARE CLEAR FROM THE FACE OF FINISHED WALL/PARTITION TO FACE OF FINISHED WALL/PARTITION OR FACE OF EXISTING WALLS ACTUAL FACE.
- SEE SHEET A101 FOR LIFE SAFETY PLAN AND FIRE PARTITION RATINGS.
- CONTRACTOR TO VERIFY ALL EXISTING CONDITIONS BEFORE CONSTRUCTION.



McMahon provides this drawing and data, regardless of form, as instruments of service. All rights including copyrights are retained by McMahon. The recipient agrees to the fullest extent permitted by law, to indemnify and hold McMahon harmless for any reuse or changes made to the drawing or data without the prior written consent by McMahon.

NO.	1	DATE	11/2/18	REVISION	DNR SUBMITTAL
-----	---	------	---------	----------	---------------

**BC ORGANICS**  
**TOWN OF HOLLAND, BROWN COUNTY, WISCONSIN**  
**RECEIVING BUILDING FIRST FLOOR PLAN**

DESIGNED	DRAWN
	KLN
PROJECT NO. D0997-91800549	
DATE SEPTEMBER 28, 2018	
FACILITY NO. 200	
SHEET NO. A201	

PRELIMINARY SET - 4/16/19



### ROOF EDGE BLOCKING ATTACHMENT

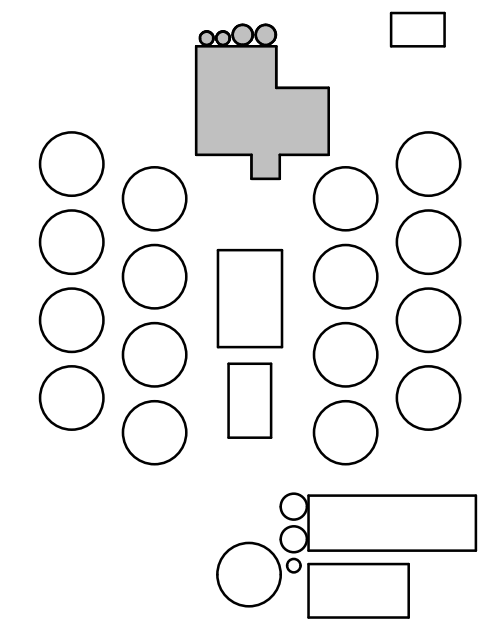
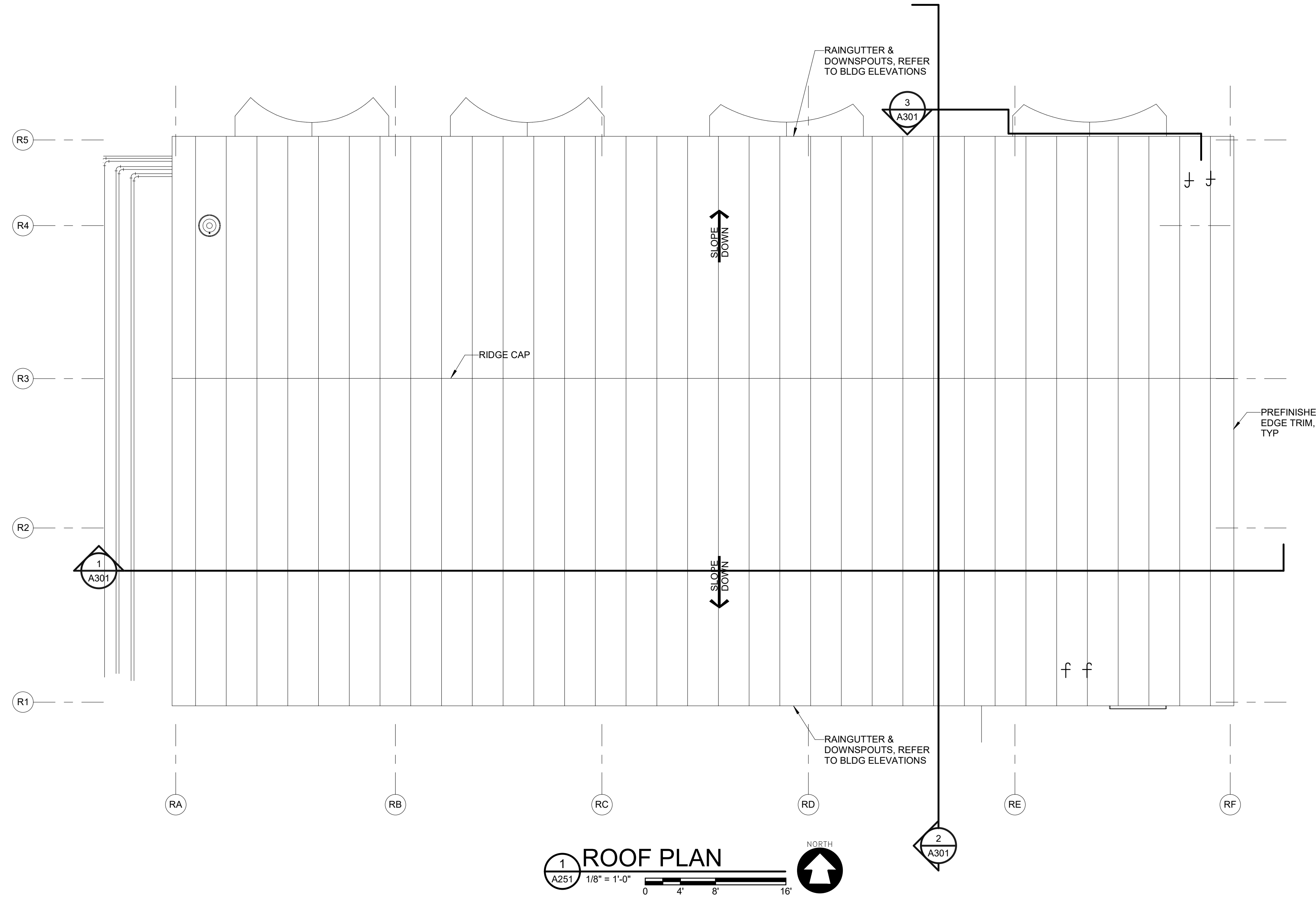
WOOD NAILERS TO CMU:	1/2" ANCHOR BOLT, 8" LONG @ 4'-0" oc; STAGGER IF OVER 6" WIDE, AT OUTSIDE CORNER 2'-0" oc FOR 8'-0."
WOOD NAILERS TO STEEL DECK:	2 ROWS NO. 10 GALVANIZED SHEET METAL SCREWS @ 24" oc WITH 5/8" GALVANIZED STEEL WASHER.
WOOD TO WOOD:	2 ROWS OF NAILS WITH 1-1/4" PENETRATION @ 24" oc WITH 12" oc AT CORNERS.
HOOK STRIPS (CLEATS):	ANNULAR TREADED NAILS 1-1/4" PENETRATION, 3/16" HEAD, CORROSION RESISTANT, 16" oc
METAL FASCIA TO WOOD:	CLEAT & NO. 10 SCREW WITH NEOPRENE WASHER AT BACK LEG.
METAL COPING & COUNTER-FLASHING TO WOOD:	CLEAT OUTSIDE LEG & NO. 10 SCREWS WITH WASHER AT 20" oc BACK LEG.
METAL COPING & COUNTER-FLASHING TO MASONRY:	CLEAT OUTSIDE LEG & MASONRY ANCHORS AT 36" oc MIN 1" INTO MASONRY.
HOOK STRIPS:	CONTINUOUS, ONE GAUGE

### GENERAL ROOF PLAN NOTES

- SLOPE TAPERED INSULATION MINIMUM 1/4" PER FOOT TO ROOF DRAINS. 2" MINIMUM THICKNESS AT DRAINS. AVERAGE ROOF INSULATION MIN. 4"
- NOT ALL ROOF PENETRATIONS INDICATED. ROOFING CONTRACTOR TO VERIFY PENETRATIONS WITH ALL BUILDING TRADES. PROVIDE APPROPRIATE FLASHING AS REQUIRED TO MAKE WATERTIGHT.
- SEE HVAC DRAWINGS FOR SIZES, QUANTITIES LOCATIONS AND TYPES OF HVAC PENETRATIONS AND ROOF TOP MOUNTED EQUIPMENT.
- PROVIDE ROOF INSULATION SADDLES AT ANY ROOF INTERFERENCES. SLOPE ON SADDLE TO BE 1/2" PER FOOT.
- FASTENERS IN CONTACT W/ PRESERVATIVE TREATED LUMBER TO BE HOT DIP GALVANIZED (G185)

### ROOF PLAN LEGEND:

- RD ROOF DRAIN - SEE DETAILS AND SPECIFICATIONS FOR ADDITIONAL INFORMATION
- OD OVERFLOW ROOF DRAIN - SEE DETAILS AND SPECIFICATIONS FOR ADDITIONAL INFORMATION
- SCUPPER OVERFLOW ROOF DRAIN - SEE DETAILS AND SPECIFICATIONS FOR ADDITIONAL INFORMATION
- ROOF WALKWAY PADS - SEE SPECIFICATIONS FOR ADDITIONAL INFORMATION
- TAPERED RIGID INSULATION- 1/4" PER FOOT MINIMUM, 1/2" PER FOOT @ EQUIPMENT SADDLES
- ROOF PENETRATIONS - SEE MECHANICAL & PLUMBING DRAWINGS



PRELIMINARY SET - 4/16/19



McMahon provides this drawing and data, regardless of form, as instruments of service. All rights including copyrights are retained by McMahon. No part of this drawing may be reproduced, stored in a retrieval system, or transmitted in any form or by any means, electronic, mechanical, photocopying, recording, or by any information storage and retrieval system, without the prior written consent by McMahon.

NO.	1	DATE	11/2/18	REVISION	DNR SUBMITTAL
-----	---	------	---------	----------	---------------

DESIGNED	DRAWN
	KLN

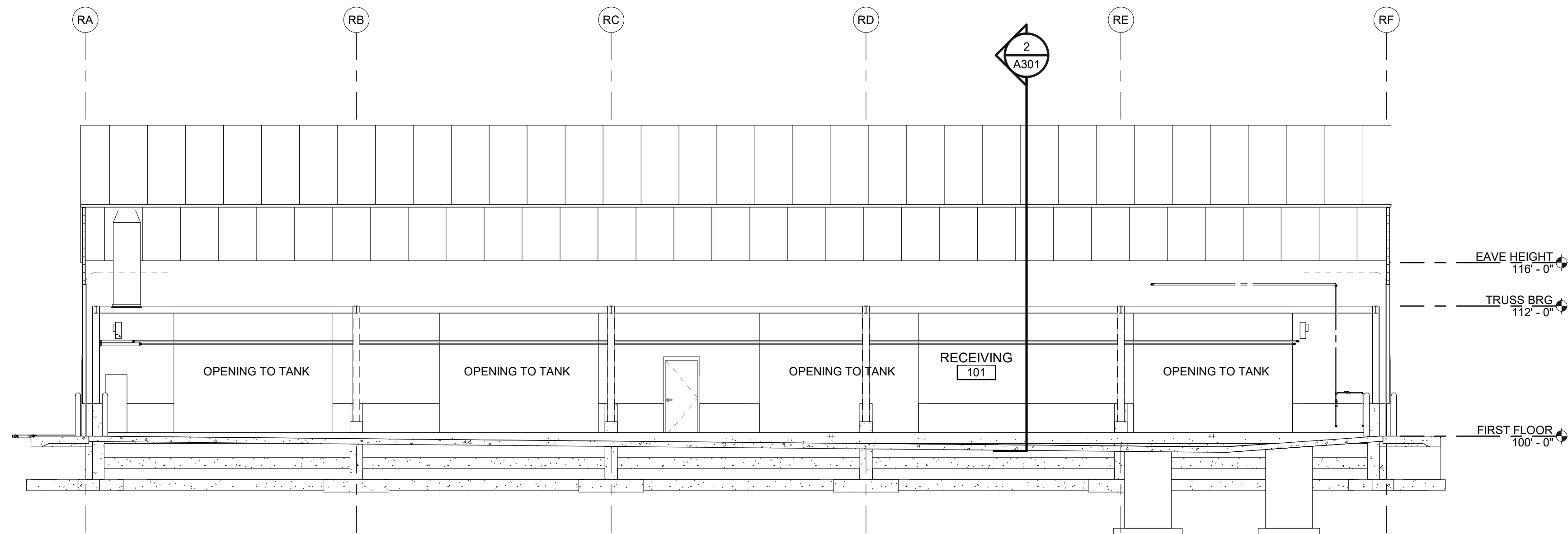
PROJECT NO. D0997-91800549

DATE SEPTEMBER 28, 2018

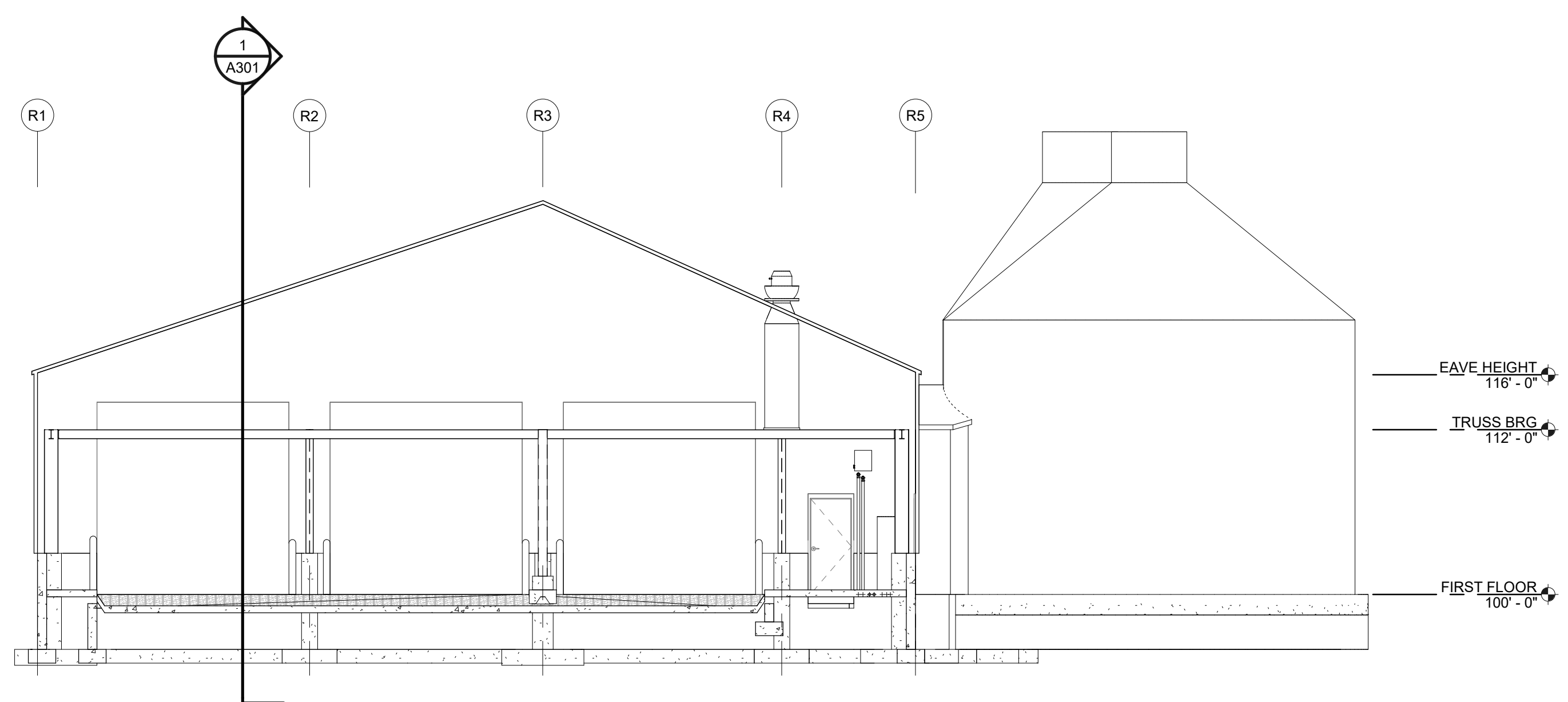
FACILITY NO. 200

SHEET NO. A251

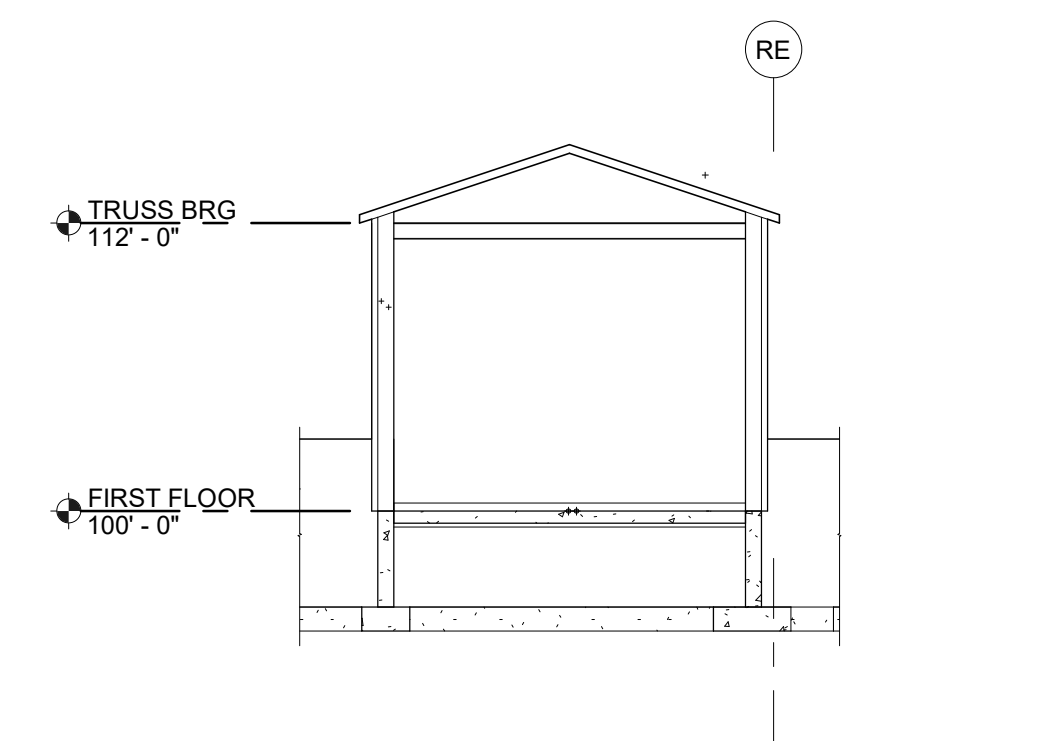
BC ORGANICS TOWN OF HOLLAND, BROWN COUNTY, WISCONSIN RECEIVING BUILDING ROOF PLAN



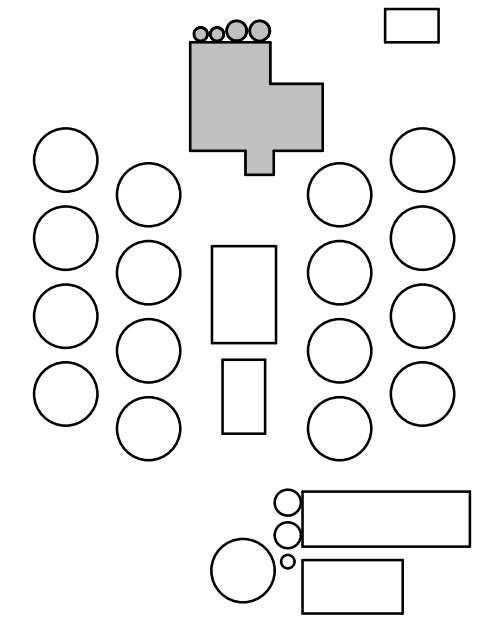
**1 BUILDING SECTION**  
 A301 1/8" = 1'-0" 0 4' 8' 16'



**2 BUILDING SECTION**  
 A301 1/8" = 1'-0" 0 4' 8' 16'



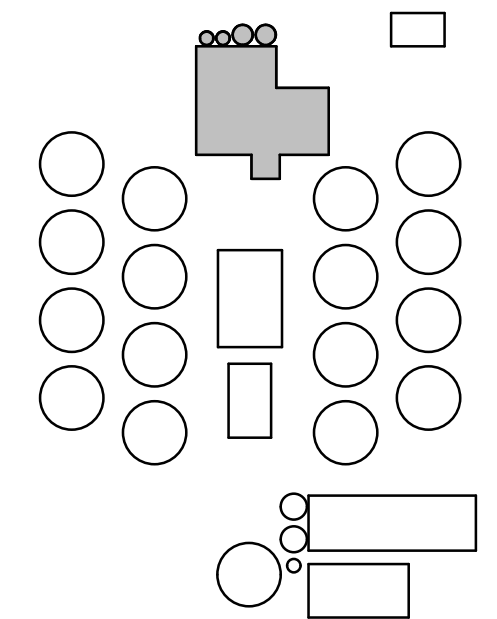
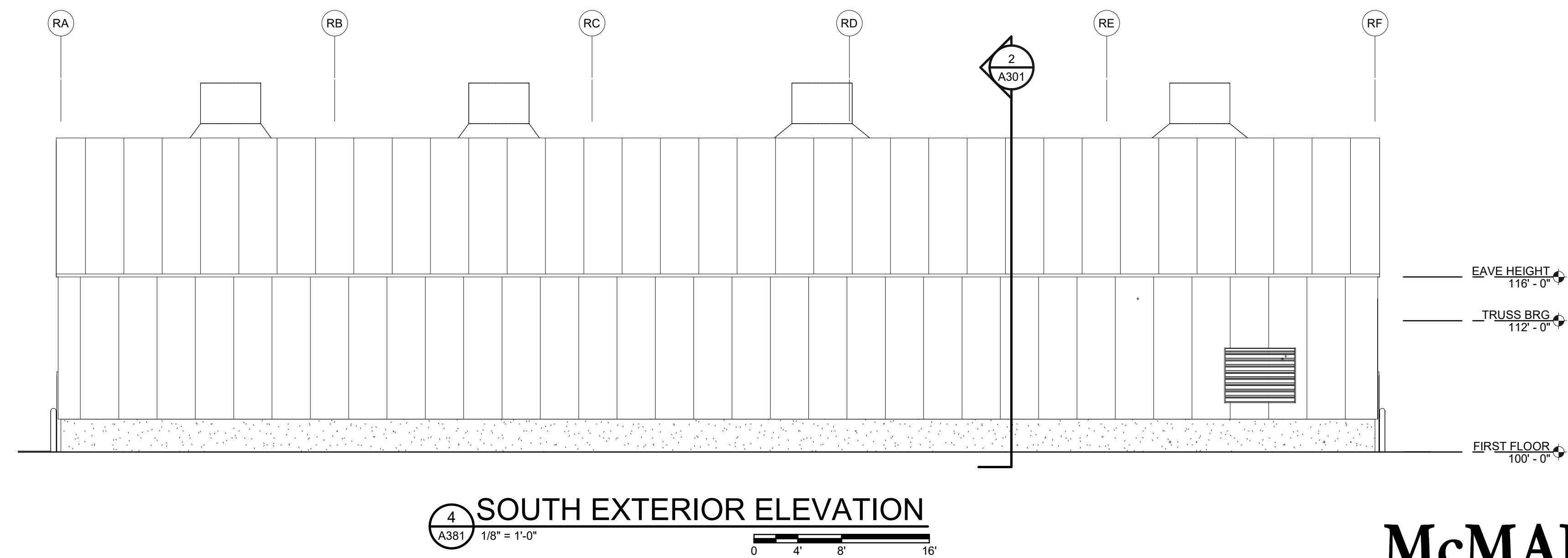
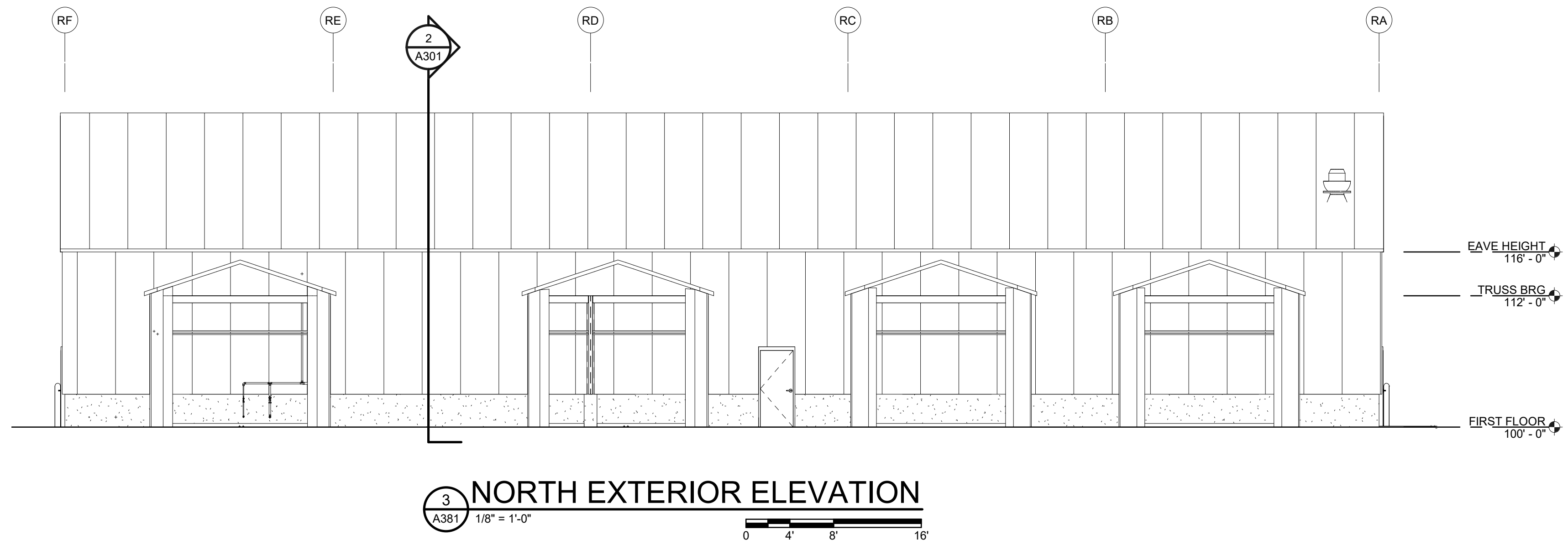
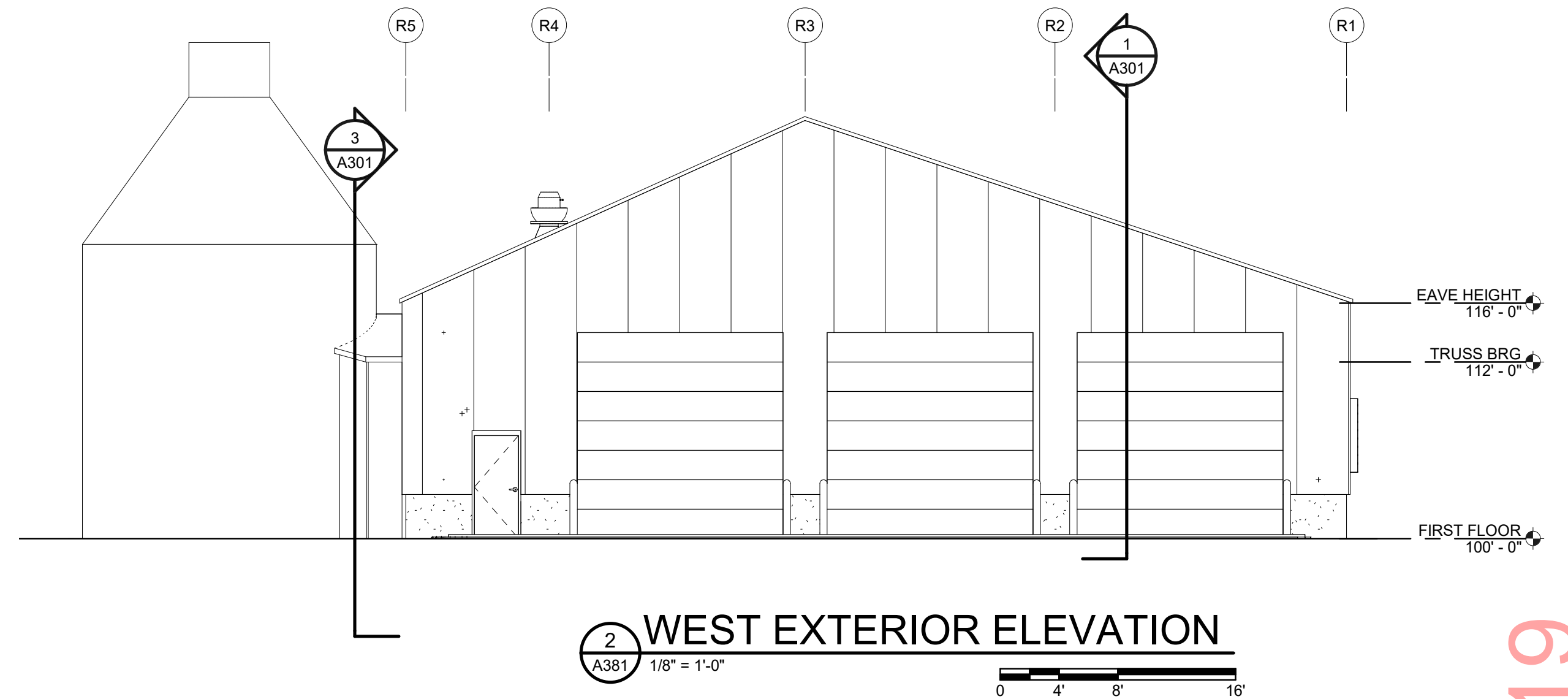
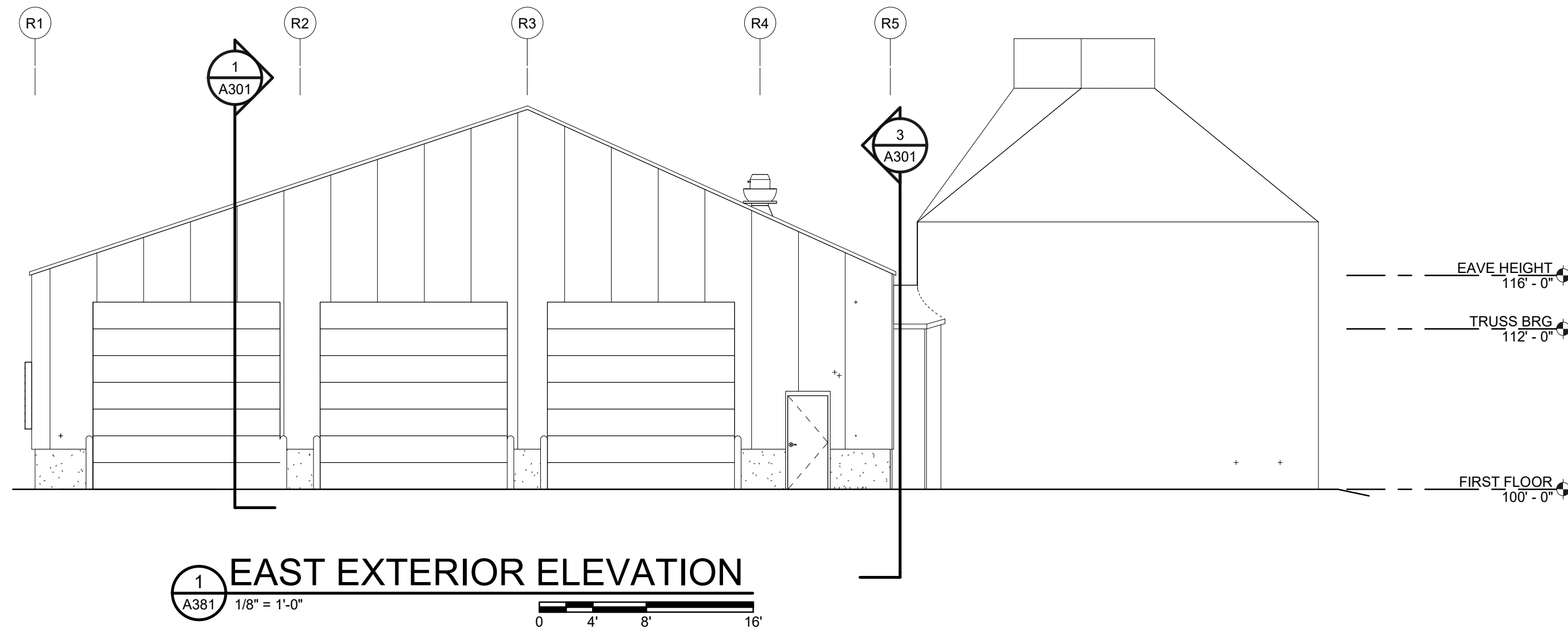
**3 SILO VESTIBULE SECTION**  
 A301 1/8" = 1'-0" 0 4' 8' 16'



**PRELIMINARY SET - 4/16/19**

<b>DYNAMIC</b>	
McMahon provides this drawing and data, regardless of form, as instruments of service. All rights including copyrights are retained by McMahon. No part of this drawing may be reproduced, stored in a retrieval system, or transmitted in any form or by any means, electronic, mechanical, photocopying, recording, or by any information storage and retrieval system, without the prior written consent by McMahon.	
NO. 1	DATE 11/2/18
DNR SUBMITTAL	REVISION
<b>BC ORGANICS</b>	
<b>TOWN OF HOLLAND, BROWN COUNTY, WISCONSIN</b>	
<b>RECEIVING BUILDING BUILDING SECTIONS</b>	
DESIGNED	DRAWN
	KLN
PROJECT NO. D0997-91800549	
DATE SEPTEMBER 28, 2018	
FACILITY NO. 200	
SHEET NO. A301	





PRELIMINARY SET - 4/16/19



McMahon provides this drawing and data, regardless of form, as instruments of service. All rights including copyrights are retained by McMahon. No part of this drawing may be reproduced, stored in a retrieval system, or transmitted in any form or by any means, electronic, mechanical, photocopying, recording, or by any information storage and retrieval system, without the prior written consent by McMahon.

NO.	DATE	REVISION
1	11/2/18	DNR SUBMITTAL

**BC ORGANICS**  
**TOWN OF HOLLAND, BROWN COUNTY, WISCONSIN**  
**RECEIVING BUILDING EXTERIOR ELEVATIONS**

DESIGNED	DRAWN
	KLN
PROJECT NO.	
D0997-91800549	
DATE	
SEPTEMBER 28, 2018	
FACILITY NO.	
200	
SHEET NO.	

A381

